



QUIRA PLUS

RECESSED LUMINAIRE

QUIRA PLUS: for this recessed luminaire, lighting comfort and performance are things to be taken for granted. QUIRA PLUS can be swivelled in to accentuate the merchandise in the sales room and at the same time it remains flush with the ceiling. And swivelled out, QUIRA PLUS reaches every high-level decoration with pinpoint accuracy. Optionally fitted with the ACTIVE LED module. This makes the precise adjustment of the light possible as regards intensity and colour temperature.



Genuine power package

Lumen packages up to 5,000 lm



Ideal application range

Optimum use in the case of great ceiling heights.



Well thought-out fastening

Our own development for ease of installation



Well protected

Optional glass cover to protect from dirt

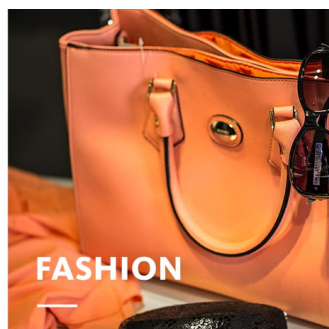


Optimum visual comfort

Black front ring for optimum glare suppression



FOOD



FASHION



SHOP






AUTOMOTIVE

QUIRA PLUS

oktalite

www.oktalite.com/quira-plus-r

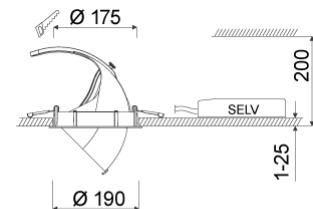
Type of luminaire	recessed luminaire
Application areas	Accent lighting, High-level decoration
Pan/tilt range	Rotates through 355°, swivels through 85° (15° inwards, 70° outwards)
Mounting	Okталite folding spring
Ceiling thickness	1 - 25 mm
Lighting technology	LED
LED Luminous Flux Class	1500 lm - 7000 lm
Light colour White	2700 K, 3000 K, 3000 K - Efficient White, 3000 K - Brilliant Colour, 3500 K, 4000 K, 4000 K - Efficient Cool
Light colour Food*	M, M+F, BF
Cooling	passive
Supply unit	Driver separate
Luminaire colour	RAL 9005 jet black RAL 9006 white aluminium RAL 9016 traffic white Special colours on request
Surface	structure powder-coated
Nominal voltage	220 - 240 V, 50/60Hz
Lighting controls	on request
Weight	Approx. 1.3 kg
Components	

-  Luminaire housing
-  Optic
-  Supply unit

Test seal



* M = Meat,
M = Meat, F = Fish,
BF = Brilliant Food



Technical details as well as weight specifications and measurements have been prepared with care. Errors excepted. All dimensions in mm · LED service life data: L80/B10 at ambient temperature (ta) 25°C. Rated lamp service life 50,000h. Luminous flux and efficiency specifications are subject to a tolerance of /- 10%. Min CRI Ra: >80 / >90· Product images are used as an example and may differ from the original · We reserve the right to make changes, insofar as they serve progress. The Single Lighting Regulation (SLR) documentation can be found in our download area. Okталite Lichttechnik GmbH · Mathias-Brüggen-Str. 73 · 50829 Cologne · T 49 221 59767-0 · F 49 221 59767-40 · mail@okталite.com · www.okталite.com · 2022-11-09

**QUIRA PLUS****oktalite**

LED Luminous Flux Class	Light colour	CRI R _a	system luminous flux*	System performance	Order number		
					white	silver	black
2000 lm	4000 K - Efficient Cool	91	2230 lm	17 W	10249728	10249729	10249730
3000 lm	2700 K	81	2795 lm	21 W	10196951	10196952	10196953
	3000 K	83	2875 lm	21 W	10196954	10196955	10196956
	3000 K - Efficient White	94	2910 lm	25 W	10196957	10196958	10196959
	3000 K - Brilliant Colour	97	2895 lm	32 W	10196948	10196949	10196950
	3500 K	84	2930 lm	21 W	10196960	10196961	10196962
	4000 K	83	3025 lm	21 W	10196963	10196964	10196965
	4000 K - Efficient Cool	91	3080 lm	25 W	10249728	10249729	10249730
4000 lm	2700 K	81	3655 lm	28 W	10196951	10196952	10196953
	3000 K	83	3760 lm	28 W	10196954	10196955	10196956
	3000 K - Efficient White	94	3835 lm	34 W	10196957	10196958	10196959
	3000 K - Brilliant Colour	97	3825 lm	46 W	10196948	10196949	10196950
	3500 K	84	3835 lm	28 W	10196960	10196961	10196962
	4000 K	83	3960 lm	28 W	10196963	10196964	10196965
	4000 K - Efficient Cool	91	4085 lm	34 W	10249728	10249729	10249730
5000 lm	2700 K	81	4460 lm	36 W	10196951	10196952	10196953
	3000 K	83	4585 lm	36 W	10196954	10196955	10196956
	3000 K - Efficient White	94	4835 lm	46 W	10196957	10196958	10196959
	3500 K	84	4675 lm	36 W	10196960	10196961	10196962
	4000 K	83	4830 lm	36 W	10196963	10196964	10196965
	4000 K - Efficient Cool	91	5120 lm	46 W	10249728	10249729	10249730
7000 lm	3000 K	80	6880 lm	54 W	10260563	10260564	10260565
	4000 K	80	7270 lm	54 W	10260566	10260567	10260568
1500 lm	M	-	1565 lm	23 W	10196939	10196940	10196941
	M+F	-	1455 lm	23 W	10196942	10196943	10196944
2000 lm	M	-	2005 lm	30 W	10196939	10196940	10196941
	M+F	-	1865 lm	30 W	10196942	10196943	10196944
	BF	-	1870 lm	19 W	10213492	10213493	10213494
3000 lm	M	-	2790 lm	46 W	10196939	10196940	10196941
	M+F	-	2595 lm	46 W	10196942	10196943	10196944

Technical details as well as weight specifications and measurements have been prepared with care. Errors excepted. All dimensions in mm · LED service life data: L80/B10 at ambient temperature (ta) 25°C. Rated lamp service life 50,000h. Luminous flux and efficiency specifications are subject to a tolerance of +/- 10%. Min CRI Ra: >80 / >90· Product images are used as an example and may differ from the original · We reserve the right to make changes, insofar as they serve progress. The Single Lighting Regulation (SLR) documentation can be found in our download area. Oktalite Lichttechnik GmbH · Mathias-Brüggen-Str. 73 · 50829 Cologne · T 49 221 59767-0 · F 49 221 59767-40 · mail@oktalite.com · www.oktalite.com · 2022-11-09

	BF	-	2815 lm	30 W	10213492	10213493	10213494
4000 lm	BF	-	3525 lm	40 W	10213492	10213493	10213494

Accessories

Order number

Oktalite folding spring

10213714

* System luminous flux based on medium flood reflector.



Efficient White: $R_s = 75$, $R_r = 91$, $R_g = 102$



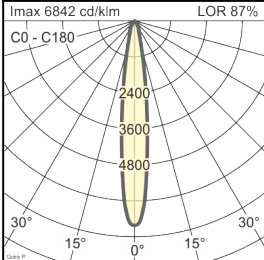
Brilliant Colour: $R_s = 94$, $R_r = 95$, $R_g = 104$

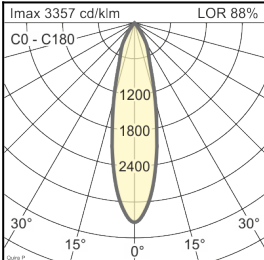
Technical details as well as weight specifications and measurements have been prepared with care. Errors excepted. All dimensions in mm · LED service life data: L80/B10 at ambient temperature (t_a) 25°C. Rated lamp service life 50,000h. Luminous flux and efficiency specifications are subject to a tolerance of $\pm 10\%$. Min CRI Ra: $>80 / >90$ · Product images are used as an example and may differ from the original · We reserve the right to make changes, insofar as they serve progress. The Single Lighting Regulation (SLR) documentation can be found in our download area. Oktalite Lichttechnik GmbH · Mathias-Brüggen-Str. 73 · 50829 Cologne · T 49 221 59767-0 · F 49 221 59767-40 · mail@oktalite.com · www.oktalite.com · 2022-11-09

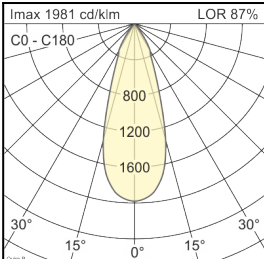
Optic QUIRA PLUS - LED

oktalite

Optic 3D faceted reflectors
 Type interchangeable reflector system

Beam angle				Cover	LOR	Order number																							
Spot						white	silver	black																					
Quira Plus - SP <table border="1"> <thead> <tr> <th>Höhe [m]</th> <th>KegelØ [cm]</th> <th>E(0°) [lx/klm]</th> <th>E(C0) [lx/klm]</th> </tr> </thead> <tbody> <tr> <td>1</td> <td>24</td> <td>6842</td> <td>3367</td> </tr> <tr> <td>2</td> <td>48</td> <td>1711</td> <td>842</td> </tr> <tr> <td>3</td> <td>73</td> <td>760</td> <td>374</td> </tr> </tbody> </table>				Höhe [m]	KegelØ [cm]	E(0°) [lx/klm]	E(C0) [lx/klm]	1	24	6842	3367	2	48	1711	842	3	73	760	374						without	87 %	-	-	10196971
Höhe [m]	KegelØ [cm]	E(0°) [lx/klm]	E(C0) [lx/klm]																										
1	24	6842	3367																										
2	48	1711	842																										
3	73	760	374																										
				clear	83 %	-	-		10196966																				

Beam angle				Cover	LOR	Order number																							
Medium Flood						white	silver	black																					
Quira Plus - MF <table border="1"> <thead> <tr> <th>Höhe [m]</th> <th>KegelØ [cm]</th> <th>E(0°) [lx/klm]</th> <th>E(C0) [lx/klm]</th> </tr> </thead> <tbody> <tr> <td>1</td> <td>43</td> <td>3357</td> <td>1573</td> </tr> <tr> <td>2</td> <td>85</td> <td>839</td> <td>393</td> </tr> <tr> <td>3</td> <td>128</td> <td>373</td> <td>175</td> </tr> </tbody> </table>				Höhe [m]	KegelØ [cm]	E(0°) [lx/klm]	E(C0) [lx/klm]	1	43	3357	1573	2	85	839	393	3	128	373	175						without	88 %	-	-	10196972
Höhe [m]	KegelØ [cm]	E(0°) [lx/klm]	E(C0) [lx/klm]																										
1	43	3357	1573																										
2	85	839	393																										
3	128	373	175																										
				clear	84 %	-	-		10196967																				

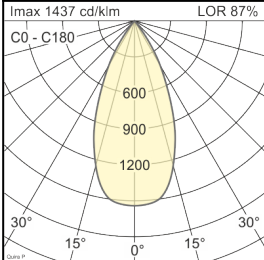
Beam angle				Cover	LOR	Order number																							
Flood						white	silver	black																					
Quira Plus - FL <table border="1"> <thead> <tr> <th>Höhe [m]</th> <th>KegelØ [cm]</th> <th>E(0°) [lx/klm]</th> <th>E(C0) [lx/klm]</th> </tr> </thead> <tbody> <tr> <td>1</td> <td>66</td> <td>1981</td> <td>857</td> </tr> <tr> <td>2</td> <td>132</td> <td>495</td> <td>214</td> </tr> <tr> <td>3</td> <td>197</td> <td>220</td> <td>95</td> </tr> </tbody> </table>				Höhe [m]	KegelØ [cm]	E(0°) [lx/klm]	E(C0) [lx/klm]	1	66	1981	857	2	132	495	214	3	197	220	95						without	87 %	-	-	10196973
Höhe [m]	KegelØ [cm]	E(0°) [lx/klm]	E(C0) [lx/klm]																										
1	66	1981	857																										
2	132	495	214																										
3	197	220	95																										
				clear	83 %	-	-		10196968																				

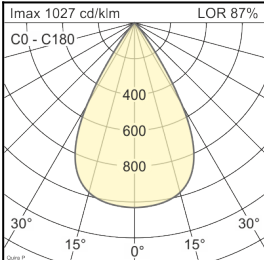
Technical details as well as weight specifications and measurements have been prepared with care. Errors excepted. All dimensions in mm · LED service life data: L80/B10 at ambient temperature (ta) 25°C. Rated lamp service life 50,000h. Luminous flux and efficiency specifications are subject to a tolerance of +/- 10%. Min CRI Ra: >80 / >90 · Product images are used as an example and may differ from the original · We reserve the right to make changes, insofar as they serve progress. The Single Lighting Regulation (SLR) documentation can be found in our download area. Oktalite Lichttechnik GmbH · Mathias-Brüggen-Str. 73 · 50829 Cologne · T 49 221 59767-0 · F 49 221 59767-40 · mail@oktalite.com · www.oktalite.com · 2022-11-09

Optic QUIRA PLUS - LED

oktalite

Optic 3D faceted reflectors
 Type interchangeable reflector system

Beam angle				Cover	LOR	Order number																							
Wide Flood						white	silver	black																					
Quira Plus - WFL <table border="1"> <thead> <tr> <th>Höhe [m]</th> <th>KegelØ [cm]</th> <th>E(0°) [lx/klm]</th> <th>E(C0) [lx/klm]</th> </tr> </thead> <tbody> <tr> <td>1</td> <td>87</td> <td>1437</td> <td>554</td> </tr> <tr> <td>2</td> <td>175</td> <td>359</td> <td>139</td> </tr> <tr> <td>3</td> <td>262</td> <td>160</td> <td>62</td> </tr> </tbody> </table>				Höhe [m]	KegelØ [cm]	E(0°) [lx/klm]	E(C0) [lx/klm]	1	87	1437	554	2	175	359	139	3	262	160	62						without	87 %	-	-	10196974
Höhe [m]	KegelØ [cm]	E(0°) [lx/klm]	E(C0) [lx/klm]																										
1	87	1437	554																										
2	175	359	139																										
3	262	160	62																										
				clear	83 %	-	-	10196969																					

Beam angle				Cover	LOR	Order number																							
Very Wide Flood						white	silver	black																					
Quira Plus - VFL <table border="1"> <thead> <tr> <th>Höhe [m]</th> <th>KegelØ [cm]</th> <th>E(0°) [lx/klm]</th> <th>E(C0) [lx/klm]</th> </tr> </thead> <tbody> <tr> <td>1</td> <td>117</td> <td>1027</td> <td>333</td> </tr> <tr> <td>2</td> <td>235</td> <td>257</td> <td>83</td> </tr> <tr> <td>3</td> <td>352</td> <td>114</td> <td>37</td> </tr> </tbody> </table>				Höhe [m]	KegelØ [cm]	E(0°) [lx/klm]	E(C0) [lx/klm]	1	117	1027	333	2	235	257	83	3	352	114	37						without	87 %	-	-	10196975
Höhe [m]	KegelØ [cm]	E(0°) [lx/klm]	E(C0) [lx/klm]																										
1	117	1027	333																										
2	235	257	83																										
3	352	114	37																										
				clear	83 %	-	-	10196970																					

Technical details as well as weight specifications and measurements have been prepared with care. Errors excepted. All dimensions in mm · LED service life data: L80/B10 at ambient temperature (ta) 25°C. Rated lamp service life 50,000h. Luminous flux and efficiency specifications are subject to a tolerance of +/- 10%. Min CRI Ra: >80 / >90 · Product images are used as an example and may differ from the original · We reserve the right to make changes, insofar as they serve progress. The Single Lighting Regulation (SLR) documentation can be found in our download area. Oktalite Lichttechnik GmbH · Mathias-Brüggen-Str. 73 · 50829 Cologne · T 49 221 59767-0 · F 49 221 59767-40 · mail@oktalite.com · www.oktalite.com · 2022-11-09



Supply unit - LED

Driver

oktalite

Version	Independent control gear
Connection type	Pre-wired plug-in connectivity
Mains connection	GST 18i3
Cable length secondary	400 mm
Nominal voltage	220 - 240 V, 50/60Hz
protection	IP20
protection class	I, II
Lighting controls	on request
Lighting technology	LED

Lighting technology	Luminaire connection	Output	System performance	max. luminaires B16	Order number
LED	RNV	450 mA	17 W	49	10211947
LED	RNV	500 mA	19 W	49	10211948
LED	RNV	550 mA	21 W	25	10211949
LED	RNV	600 mA	23 W	25	10211950
LED	RNV	650 mA	25 W	25	10211951
LED	RNV	750 mA	28 W	25	10211953
LED	RNV	800 mA	30 W	28	10259144
LED	RNV	850 mA	32 W	25	10211955
LED	RNV	900 mA	34 W	28	10259145
LED	RNV	950 mA	36 W	25	10211957
LED	RNV	1050 mA	40 W	25	10211958
LED	RNV	1200 mA	46 W	30	10185634
LED	RNV	950 mA	54 W	30	10260617

Technical details as well as weight specifications and measurements have been prepared with care. Errors excepted. All dimensions in mm · LED service life data: L80/B10 at ambient temperature (ta) 25°C. Rated lamp service life 50,000h. Luminous flux and efficiency specifications are subject to a tolerance of +/- 10%. Min CRI Ra: >80 / >90· Product images are used as an example and may differ from the original · We reserve the right to make changes, insofar as they serve progress. The Single Lighting Regulation (SLR) documentation can be found in our download area. Oktalite Lichttechnik GmbH · Mathias-Brüggen-Str. 73 · 50829 Cologne · T 49 221 59767-0 · F 49 221 59767-40 · mail@oktalite.com · www.oktalite.com · 2022-11-09