



LORETO

SUSPENDED LUMINAIRE

LORETO combines performance with large-area, visible light and in that way is ideally qualified for representative areas such as malls or entrance areas. Three different diameters, two different light colours and three pendant lengths leave a lot of leeway for supporting the architecture. At the same time, LORETO is, with its up to 10,000 lm a real power package.



Ideal application

Guidance with visible light, for example in malls



Three sizes

Three different diameters available



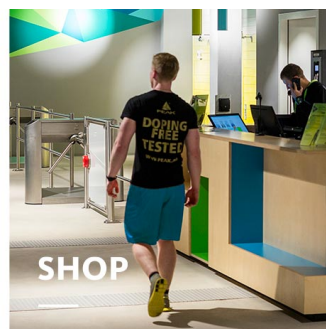
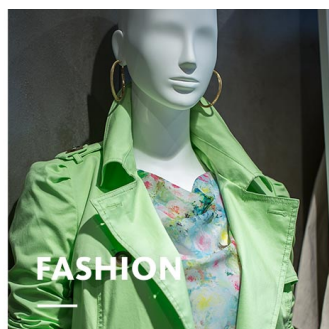
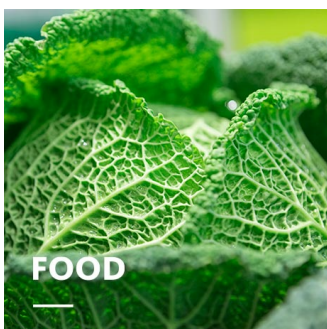
Strong light output

Lumen packages from 5,000 – 10,000 lm



Intelligent lighting

LED^{IQ} for your smart lighting management



LORETO


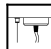
oktalite

www.oktalite.com/loreto-p

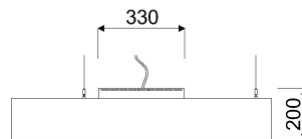
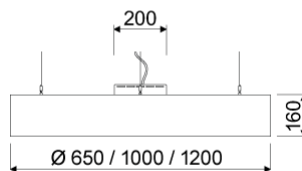
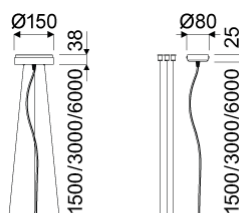
| | |
|-------------------------|--|
| Type of luminaire | suspended luminaire |
| Application areas | base illumination |
| Pan/tilt range | fixed |
| Mounting | Surface mounted, Surface mounted |
| Lighting technology | LED |
| LED Luminous Flux Class | 5000 lm - 10000 lm |
| Light colour White | 3000 K, 4000 K |
| Cooling | passive |
| Supply unit | Driver integrated |
| Luminaire colour | RAL 9005 jet black RAL 9006 white aluminium RAL 9016 traffic white Special colours on request |

| | |
|-------------------|-----------------------------|
| Surface | structure powder-coated |
| Suspension length | 1500mm, 3000mm, 6000mm |
| Nominal voltage | 220 - 240 V, 50/60Hz |
| Lighting controls | on request |
| Weight | 12.5 kg / 22.5 kg / 25.5 kg |

Components

-  Luminaire housing
-  Suspensions

Test seal



Technical details as well as weight specifications and measurements have been prepared with care. Errors excepted. All dimensions in mm · LED service life data: L80/B10 at ambient temperature (ta) 25°C. Rated lamp service life 50,000h. Luminous flux and efficiency specifications are subject to a tolerance of +/- 10%. Min CRI Ra: >80 / >90 · Product images are used as an example and may differ from the original · We reserve the right to make changes, insofar as they serve progress. The Single Lighting Regulation (SLR) documentation can be found in our download area. Oktalite Lichttechnik GmbH · Mathias-Brüggen-Str. 73 · 50829 Cologne · T 49 221 59767-0 · F 49 221 59767-40 · mail@oktalite.com · www.oktalite.com · 2022-11-07

**LORETO****oktalite**

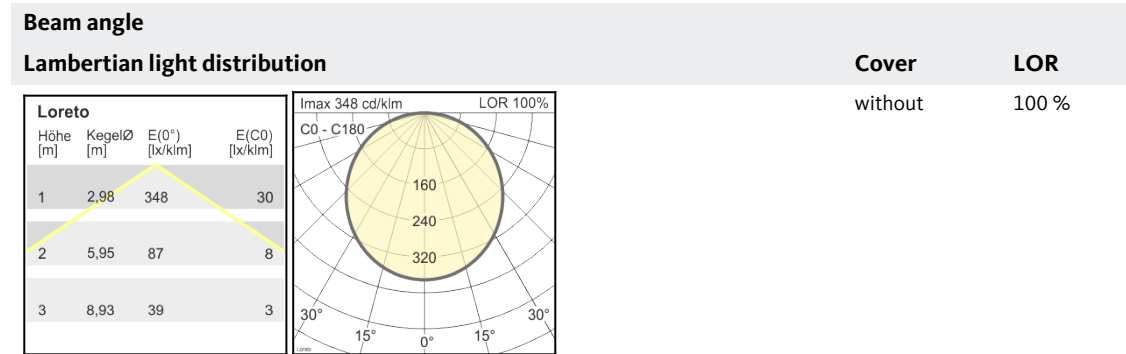
| Size | LED Luminous Flux Class | Light colour | CRI R _a | system luminous flux | System performance | Order number | | |
|-----------|-------------------------|--------------|--------------------|----------------------|--------------------|--------------|----------|----------|
| | | | | | | white | silver | black |
| Ø 650 mm | 5000 lm | 3000 K | 80 | 5060 lm | 48 W | 10172779 | 10172780 | 10172781 |
| Ø 650 mm | | 4000 K | 80 | 5325 lm | 48 W | 10172782 | 10172783 | 10172784 |
| Ø 1000 mm | 8000 lm | 3000 K | 80 | 7990 lm | 72 W | 10172785 | 10172786 | 10172787 |
| Ø 1000 mm | | 4000 K | 80 | 8410 lm | 72 W | 10172788 | 10172789 | 10172790 |
| Ø 1200 mm | 10000 lm | 3000 K | 80 | 9465 lm | 85 W | 10172791 | 10172792 | 10172793 |
| Ø 1200 mm | | 4000 K | 80 | 9960 lm | 85 W | 10172794 | 10172795 | 10172796 |

Technical details as well as weight specifications and measurements have been prepared with care. Errors excepted. All dimensions in mm · LED service life data: L80/B10 at ambient temperature (ta) 25°C. Rated lamp service life 50,000h. Luminous flux and efficiency specifications are subject to a tolerance of /- 10%. Min CRI Ra: >80 / >90· Product images are used as an example and may differ from the original · We reserve the right to make changes, insofar as they serve progress. The Single Lighting Regulation (SLR) documentation can be found in our download area. Oktalite Lichttechnik GmbH · Mathias-Brüggen-Str. 73 · 50829 Cologne · T 49 221 59767-0 · F 49 221 59767-40 · mail@oktalite.com · www.oktalite.com · 2022-11-07

Optic Loreto - LED

oktalite

Optic Diffuser (opal)
 Type Optic integrated



* Cover: Opaque PMMA cover disc, satin-finished on one side, 5 mm

Technical details as well as weight specifications and measurements have been prepared with care. Errors excepted. All dimensions in mm · LED service life data: L80/B10 at ambient temperature (ta) 25°C. Rated lamp service life 50,000h. Luminous flux and efficiency specifications are subject to a tolerance of +/- 10%. Min CRI Ra: >80 / >90· Product images are used as an example and may differ from the original · We reserve the right to make changes, insofar as they serve progress. The Single Lighting Regulation (SLR) documentation can be found in our download area. Oktalite Lichttechnik GmbH · Mathias-Brüggen-Str. 73 · 50829 Cologne · T 49 221 59767-0 · F 49 221 59767-40 · mail@oktalite.com · www.oktalite.com · 2022-11-07

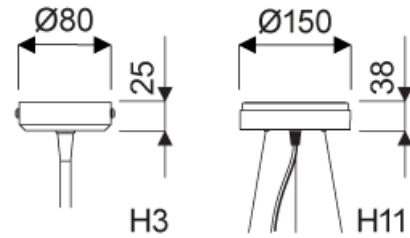


Mounting - LED

Suspensions

oktalite

| | |
|----------------------------|--------------------------------|
| Lead colour | transparent |
| Connection type | Pre-wired plug-in connectivity |
| Luminaire connection | GST18/3 |
| Number of wire suspensions | 3 wires |



| Mounting | Suspension length | Order number | | |
|---------------------|-------------------|--------------|----------|----------|
| | | white | silver | black |
| Surface mounted H3 | 1500mm | 10155146 | 10155147 | 10155148 |
| Surface mounted H3 | 3000mm | 10155149 | 10155150 | 10155151 |
| Surface mounted H3 | 6000mm | 10155152 | 10155153 | 10155154 |
| Surface mounted H11 | 1500mm | 10155155 | 10155156 | 10155157 |
| Surface mounted H11 | 3000mm | 10155158 | 10155159 | 10155160 |
| Surface mounted H11 | 6000mm | 10155161 | 10155162 | 10155163 |

Technical details as well as weight specifications and measurements have been prepared with care. Errors excepted. All dimensions in mm · LED service life data: L80/B10 at ambient temperature (ta) 25°C. Rated lamp service life 50,000h. Luminous flux and efficiency specifications are subject to a tolerance of +/- 10%. Min CRI Ra: >80 / >90 · Product images are used as an example and may differ from the original · We reserve the right to make changes, insofar as they serve progress. The Single Lighting Regulation (SLR) documentation can be found in our download area. Oktalite Lichttechnik GmbH · Mathias-Brüggen-Str. 73 · 50829 Cologne · T 49 221 59767-0 · F 49 221 59767-40 · mail@oktalite.com · www.oktalite.com · 2022-11-07