



# JUNO TWIN

TRACK LIGHT



### Optimum light distribution

By means of novel directional lighting control with a free-form lens instead of a reflector



### Ideal applications

Systematic illumination of goods in the assortment aisles



### New design language

With visible, teardrop-shaped lens and significant long-distance effect



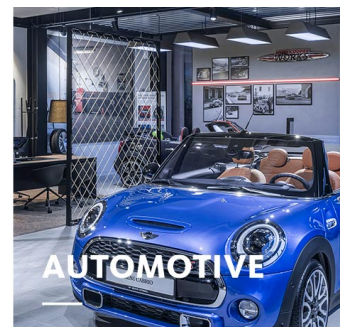
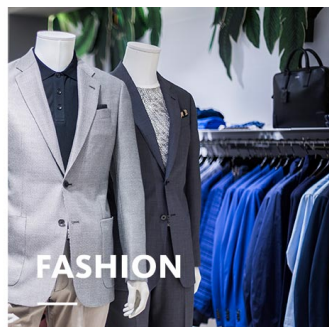
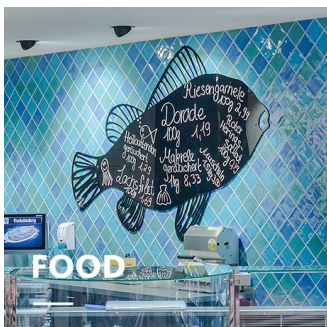
### Easy alignment

Each Spotlight head can be swivelled through up to 40°; easy, precise adjustment thanks to scale



### Intelligent lighting



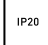

LED<sup>IQ</sup> for smart lighting management

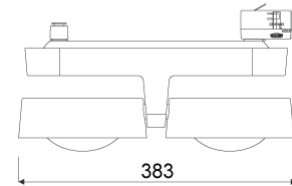
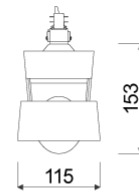


# JUNO TWIN

# oktalite

[www.oktalite.com/juno-twin-t](http://www.oktalite.com/juno-twin-t)

Type of luminaire	track light
Application areas	Aisle zone illumination, base illumination
Pan/tilt range	80° swivel range
Mounting	3P Power Track, not suitable for vertical mounting
Lighting technology	LED
LED Luminous Flux Class	3000 lm - 5000 lm
Light colour White	2700 K, 3000 K, 3000 K - Efficient White, 3500 K, 4000 K, 4000 K - Efficient Cool
Cooling	passive
Supply unit	Driver integrated
Luminaire colour	RAL 9005 jet black RAL 9006 white aluminium RAL 9016 traffic white Special colours on request
Surface	structure powder-coated
Nominal voltage	220 - 240 V, 50/60Hz
Lighting controls	on request
Weight	Approx. 3.2 kg
Components	 Luminaire housing
Test seal	  



Technical details as well as weight specifications and measurements have been prepared with care. Errors excepted. All dimensions in mm · LED service life data: L80/B10 at ambient temperature (ta) 25°C. Rated lamp service life 50,000h. Luminous flux and efficiency specifications are subject to a tolerance of /- 10%. Min CRI Ra: >80 / >90· Product images are used as an example and may differ from the original · We reserve the right to make changes, insofar as they serve progress. The Single Lighting Regulation (SLR) documentation can be found in our download area. Oktalite Lichttechnik GmbH · Mathias-Brüggen-Str. 73 · 50829 Cologne · T 49 221 59767-0 · F 49 221 59767-40 · mail@oktalite.com · www.oktalite.com · 2022-10-04

**JUNO TWIN****oktalite**

LED Luminous Flux Class	Light colour	CRI R <sub>a</sub>	system luminous flux	System performance	max. luminaires B16	Order number			
						white	silver	black	
3000 lm	2700 K	> 80	2 x 2760 lm	42 W	12	10221453	10221454	10221455	
	3000 K	> 80	2 x 2835 lm	42 W	12	10221456	10221457	10221458	
	3000 K - Efficient White	> 90	2 x 2865 lm	50 W	13	10221459	10221460	10221461	
	3500 K	> 80	2 x 2895 lm	42 W	12	10221462	10221463	10221464	
	4000 K	> 80	2 x 2990 lm	42 W	12	10221465	10221466	10221467	
	4000 K - Efficient Cool	> 90	2 x 3035 lm	50 W	13	10249822	10249823	10249824	
	4000 lm	2700 K	> 80	2 x 3600 lm	56 W	12	10221468	10221469	10221470
4000 lm	3000 K	> 80	2 x 3700 lm	56 W	12	10221471	10221472	10221473	
	3000 K - Efficient White	> 90	2 x 3760 lm	68 W	14	10221474	10221475	10221476	
	3500 K	> 80	2 x 3775 lm	56 W	12	10221477	10221478	10221479	
	4000 K	> 80	2 x 3900 lm	56 W	12	10221480	10221481	10221482	
	4000 K - Efficient Cool	> 90	2 x 3985 lm	68 W	14	10249825	10249826	10249827	
	5000 lm	2700 K	> 80	2 x 4375 lm	72 W	12	10221483	10221484	10221485
	5000 lm	3000 K	> 80	2 x 4495 lm	72 W	12	10221486	10221487	10221488
3000 K - Efficient White		> 90	2 x 4710 lm	92 W	15	10229270	10229271	10229272	
3500 K		> 80	2 x 4585 lm	72 W	12	10221489	10221490	10221491	
4000 K		> 80	2 x 4735 lm	72 W	12	10221492	10221493	10221494	
4000 K - Efficient Cool		> 90	2 x 4995 lm	92 W	15	10249828	10249829	10249830	

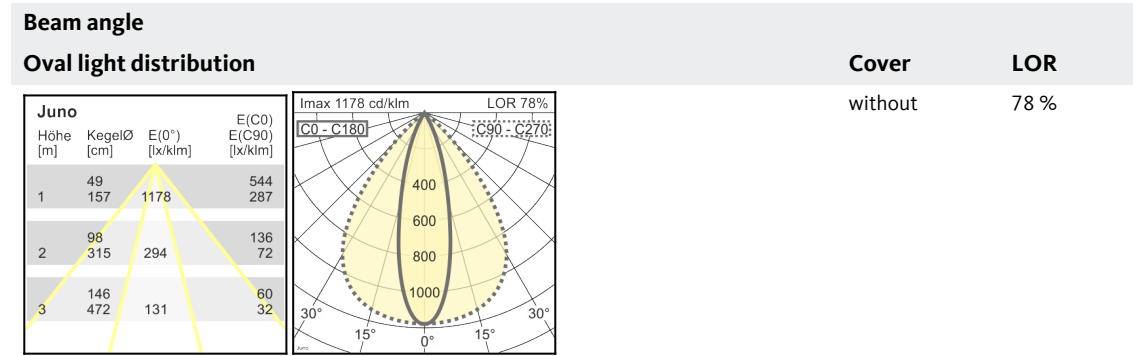
Efficient White: R<sub>s</sub> = 75, R<sub>r</sub> = 91, R<sub>g</sub> = 102

Technical details as well as weight specifications and measurements have been prepared with care. Errors excepted. All dimensions in mm · LED service life data: L80/B10 at ambient temperature (ta) 25°C. Rated lamp service life 50,000h. Luminous flux and efficiency specifications are subject to a tolerance of +/- 10%. Min CRI Ra: >80 / >90 · Product images are used as an example and may differ from the original · We reserve the right to make changes, insofar as they serve progress. The Single Lighting Regulation (SLR) documentation can be found in our download area. Oktalite Lichttechnik GmbH · Mathias-Brüggen-Str. 73 · 50829 Cologne · T 49 221 59767-0 · F 49 221 59767-40 · mail@oktalite.com · www.oktalite.com · 2022-10-04

# Optic Juno - LED

# oktalite

Optic Freeform lens  
 Type Optic integrated



Technical details as well as weight specifications and measurements have been prepared with care. Errors excepted. All dimensions in mm · LED service life data: L80/B10 at ambient temperature (ta) 25°C. Rated lamp service life 50,000h. Luminous flux and efficiency specifications are subject to a tolerance of +/- 10%. Min CRI Ra: >80 / >90 · Product images are used as an example and may differ from the original · We reserve the right to make changes, insofar as they serve progress. The Single Lighting Regulation (SLR) documentation can be found in our download area. Oktalite Lichttechnik GmbH · Mathias-Brüggen-Str. 73 · 50829 Cologne · T 49 221 59767-0 · F 49 221 59767-40 · mail@oktalite.com · www.oktalite.com · 2022-10-04