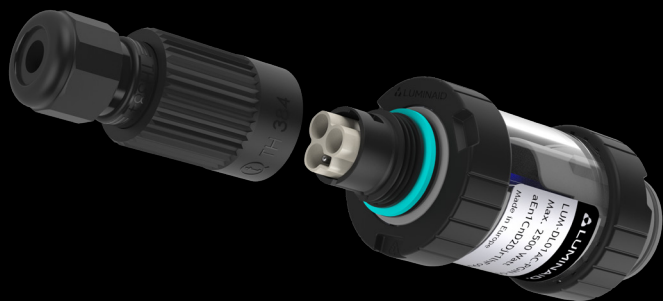


## CONNECTS: PLUG.IN 000A

### POWER SUPPLY CABLE

- Due to their multifunctional connector, the DATALUX light lines can not be connected directly to the AC power supply.
- With this PLUG.IN 000A it is possible to connect the light line to the power supply.
- After installation of the power plug, the rest of the light line is completely plug & play.
- With this minimalist version, only the AC power supply connection is provided so dimming is not possible. For this option, select the PLUG.IN 00CA.



## Features

article no.: LUM-DL01AC-PGIN-000A

### Dimensions

148 x Ø40 x Ø45 mm

### IP class

IP65 (mounted)

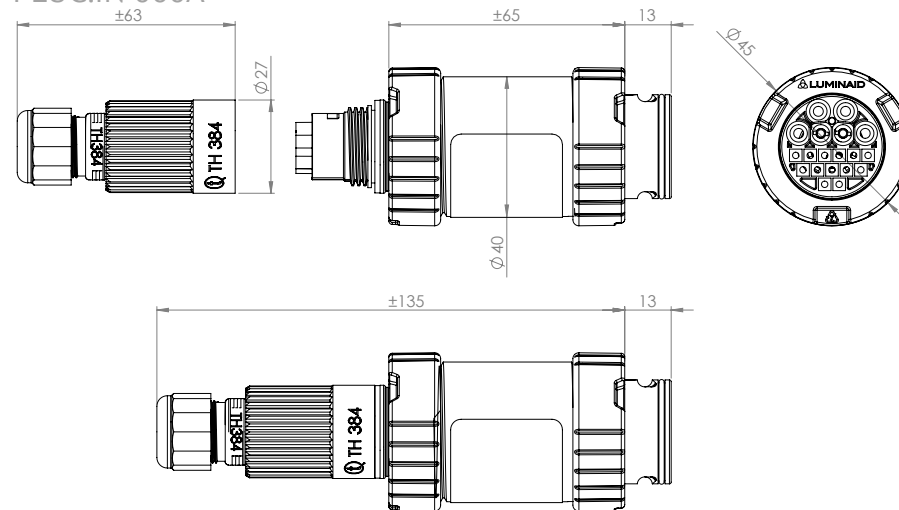
### IK class

IK10 (mounted)

### Passed signals

AC power supply

## PLUG.IN 000A

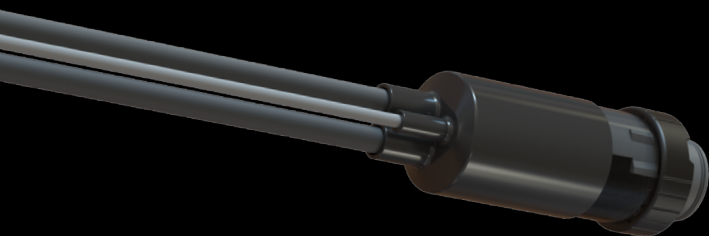


All products, product specifications and data are subject to change without notice to improve reliability, safety, function, design or otherwise.

## CONNECTS: PLUG.IN OECA

### POWER SUPPLY CABLE

- Due to their multifunctional connector, the DATALUX light lines can not be connected directly to the AC power supply.
- With this PLUG.IN OECA it is possible to connect the light line to the power supply.
- After installation of this PLUG.IN OECA, the rest of the light line is completely plug & play.
- In addition to AC power, this version also features 0-10 V dimming and a constant AC power supply for the DCEM emergency lighting TRONIC.

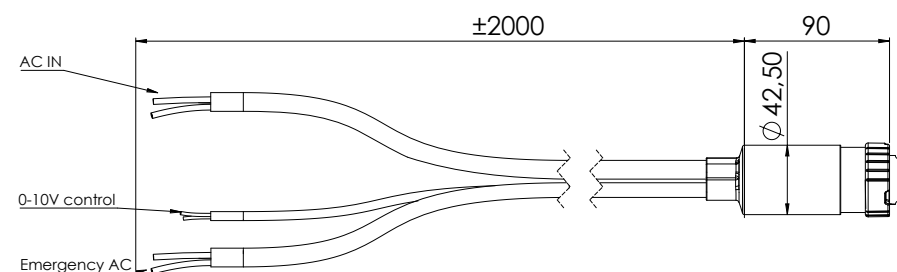


## Features

article no.: LUM-DL21AC-PGIN-OECA

Dimensions	90 x Ø45 mm
Cable length	±2000 mm
IP class	IP65 (mounted)
IK class	IK10 (mounted)
Passed signals	AC power supply, Control (0-10 V dimming), Emergency AC

## PLUG.IN OECA



All products, product specifications and data are subject to change without notice to improve reliability, safety, function, design or otherwise.