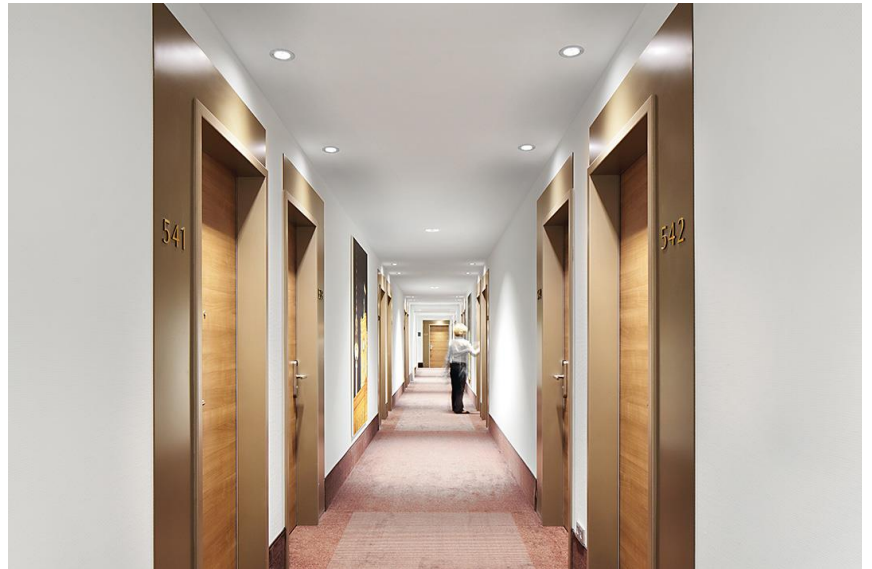




MICROS II R68



- Miniaturised LED downlight for high-performance accent lighting
- Ceiling cut-out: Ø 68 mm
- Luminaire head tiltable through $\pm 20^\circ$
- Light distribution with good glare control with beam characteristic wideflood (WFL)
- Spot (SP), flood (FL) and very wideflood (VFL) variants can be ordered via myMICROS
- Faceted aluminium reflector, highly specular silver-colour, with decorative reflector edge
- Decorative reflector edge can be personalised in white; black, copper-colour or brass-colour are possible as variants
- Housing made of die-cast aluminium
- Cover ring in white, black or brushed aluminium
- 50000 h service life at 80 % luminous flux
- Colour temperature: 2700 K (LED927: warm white), 3000 K (LED930: warm white), 4000 K (LED940: intermediate white)
- Colour rendering index: Ra > 90
- Luminaire luminous flux: 800 lm (11 W)
- Complete model consists of luminaire and ballast unit (switchable) or (LDO: dimmable Dali only/switchDim)
- Variants with basicDim Wireless control unit via app with Bluetooth® (BC) or phase leading edge / trailing edge can be ordered via myMICROS
- Mains voltage: 220–240 V / 0/50/60 Hz
- 2-pole connection terminal with plug connection (switchable), 5-pole (dimmable Dali only)
- Luminaire pre-wired using halogen-free leads
- Tool-free mounting via two fixing clips for ceiling thicknesses 3-15 mm
- IP44 degree of protection achieved when recessed in closed ceilings using optional accessory (please order separately)
- Please go to the main product name in the ONLINE catalog to find the latest power consumption figures based on continuous improvements in efficiency

Accessory

MICROS2 R68 CASTING SURROUND	22171584
MICROS2 R68 IP44 COVER	60300033
RETROFIT-RING R80/R68 WH	60300035

